



79, Hereford Road, Shrewsbury, SY3 7QY

£1,050 Per Month



79, Hereford Road, Shrewsbury, SY3 7QY

£1,050 Per Month

VIRTUAL TOUR AVAILABLE: Recently renovated, spacious two bedroom semi-detached house offering balanced living accommodation with a large landscaped garden to the rear. Located just a short distance from Shrewsbury town centre, a host of amenities and providing excellent access to road links.

Available: 08/04/26

Description

Comprising: living room, dining area, kitchen with oven and gas hob, space for washing machine and fridge/freezer, door to rear garden featuring useful shed/summer house (note this may be swapped for a standard shed at some point during the tenancy). Stairs to first floor landing, two double bedrooms, bathroom with bath and separate shower enclosure. On street parking. Double glazing. Gas central heating. EPC D.



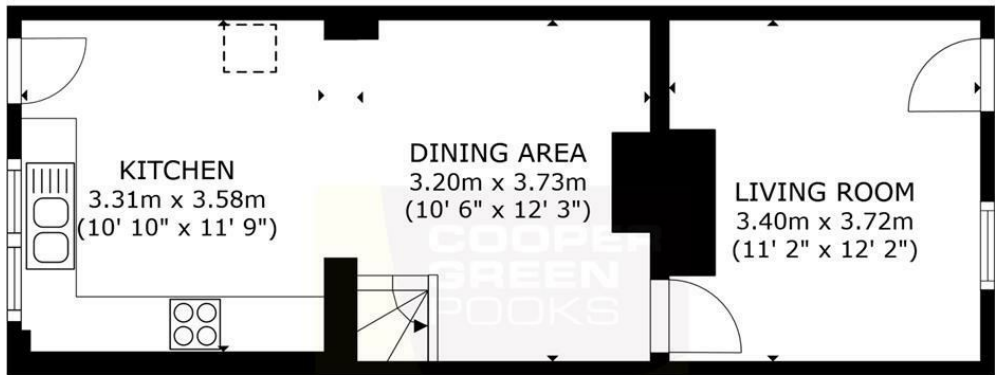
Unfurnished

Council Tax Band: B

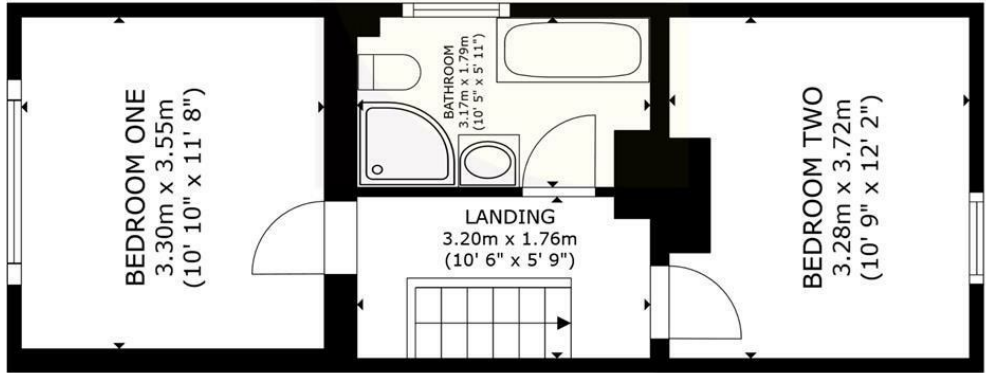
Available: 8th April 2026

EPC: D

Floor Plans



FLOOR 1



FLOOR 2

GROSS INTERNAL AREA
FLOOR 1 38.5 m² (415 sq.ft.) FLOOR 2 38.1 m² (410 sq.ft.)
TOTAL : 76.6 m² (825 sq.ft.)
SIZES AND DIMENSIONS ARE APPROXIMATE, ACTUAL MAY VARY.

These particulars, whilst believed to be accurate are set out as a general outline only for guidance and do not constitute any part of an offer or contract. Intending purchasers should not rely on them as statements of representation of fact, but must satisfy themselves by inspection or otherwise as to their accuracy. No person in this firms employment has the authority to make or give any representation or warranty in respect of the property.